

# How to install and activate SolidWorks

*Guidelines for downloading & installing a student version 2019-2020, for educational purposes, SolidWorks software*

1. Log in to <http://www.solidworks.com/EuropeanSDK>
2. Select **Student** Option, enter the code - **9SDK2019**, click **Request Download**.

### SOLIDWORKS Community Download Instructions

Download instructions for qualified educators, students, military, sponsored organizations, makers, and hobbyists.

Please enter your information in the fields below. Note that all fields are required. Please enter accurate information, including email address. Download instructions and other important information may, depending on the type of license selected, be emailed to the address you provide.

Please refer to DS SOLIDWORKS Corp.'s privacy policy link below to understand how your data may be used.

NOT FOR COMMERCIAL USE.

#### Contact Information

FIRST NAME Rachel	LAST NAME Zhan
EMAIL 2456195@qq.com	Student

#### Product Information

I already have a Serial Number that starts with 9020  
 Yes  
 No

Academic Version  
 2020-2021  2019-2020

9SDK2019

[Request Download](#)

3. Click **Accept and Continue**

### SOLIDWORKS Community Access Initiative

Dassault Systemes SolidWorks Community Access Eligibility and Terms of Use Agreement.

(Please read this agreement and ACCEPT or DECLINE its terms and conditions at the bottom of the page.)

I "Community Access," "Student Access" or "Student Access product" refers to Student Standard (formerly known as the Student Design Kit/SDK), Student Premium (formerly known as the Student Engineering Kit/SEK), or 60-Day Trial version of SOLIDWORKS software.

Eligibility for SOLIDWORKS Community Access Licenses:

SOLIDWORKS Community Access licenses available at this website are provided only to:  
Students and Educators at academic institutions that have been authorized by Dassault Systemes SolidWorks Corporation ("DS SolidWorks") to offer SOLIDWORKS Community Access; and Students and Educators who have received Student Access for trial purposes. SOLIDWORKS Community Access also includes makers, hobbyists, military, and sponsored organizations.

[I decline](#) [Accept and Continue](#)

- Copy and save the serial number, or print it from your browser so that you have a backup copy of the serial number(s). Click Download-> SolidWorkSetup.exe will be downloaded.

## SOLIDWORKS Community Access

For qualified educators, students, military, sponsored organizations, makers, and hobbyists.

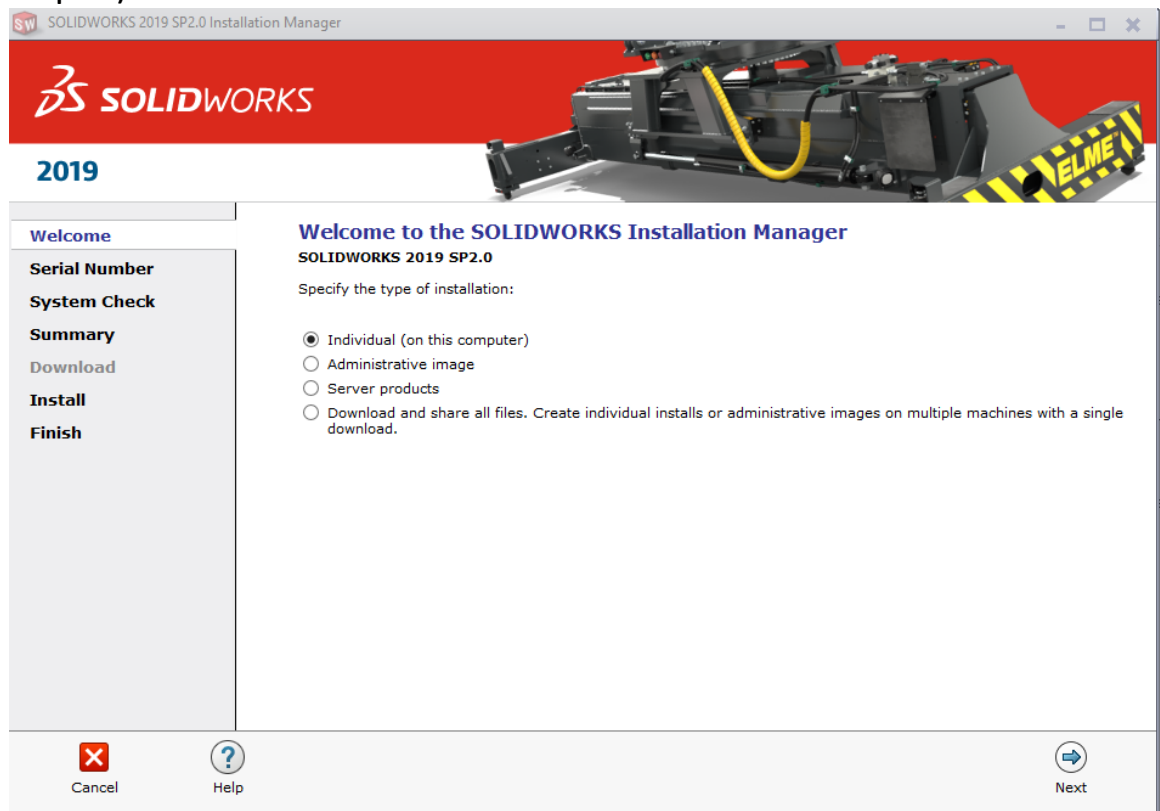
Below is your SOLIDWORKS Serial Number(s). You will need this info during installation:

Your SOLIDWORKS CAD Serial Number is: 9020 0091 0565 4666 6JR3 7SHD  
Your SOLIDWORKS CAM Student Pro Number is: 9020 0091 0575 3524 CYD8 5VJ8

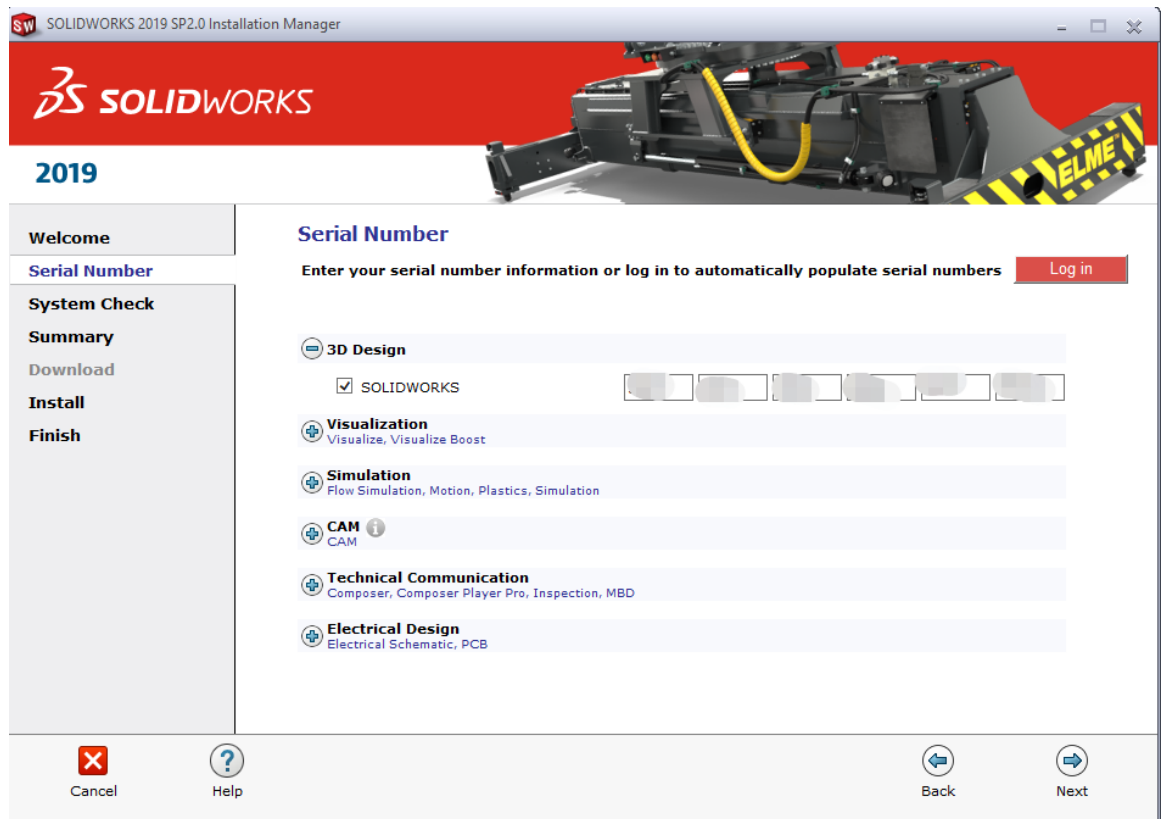
You may, depending on the type of license you've selected, receive a confirmation email with this information. However, we recommend that you write it down, print it, or take a screen capture anyway and keep it in a safe place. Emails occasionally get clobbered by spam filters, accidentally deleted, or simply misplaced.

Download

- Open and unzip the downloaded SolidWorkSetup.exe file to start the Installation Manager. Once the Installation Manager is running, select the option **Individual (on this computer)** and click the **Next** arrow.



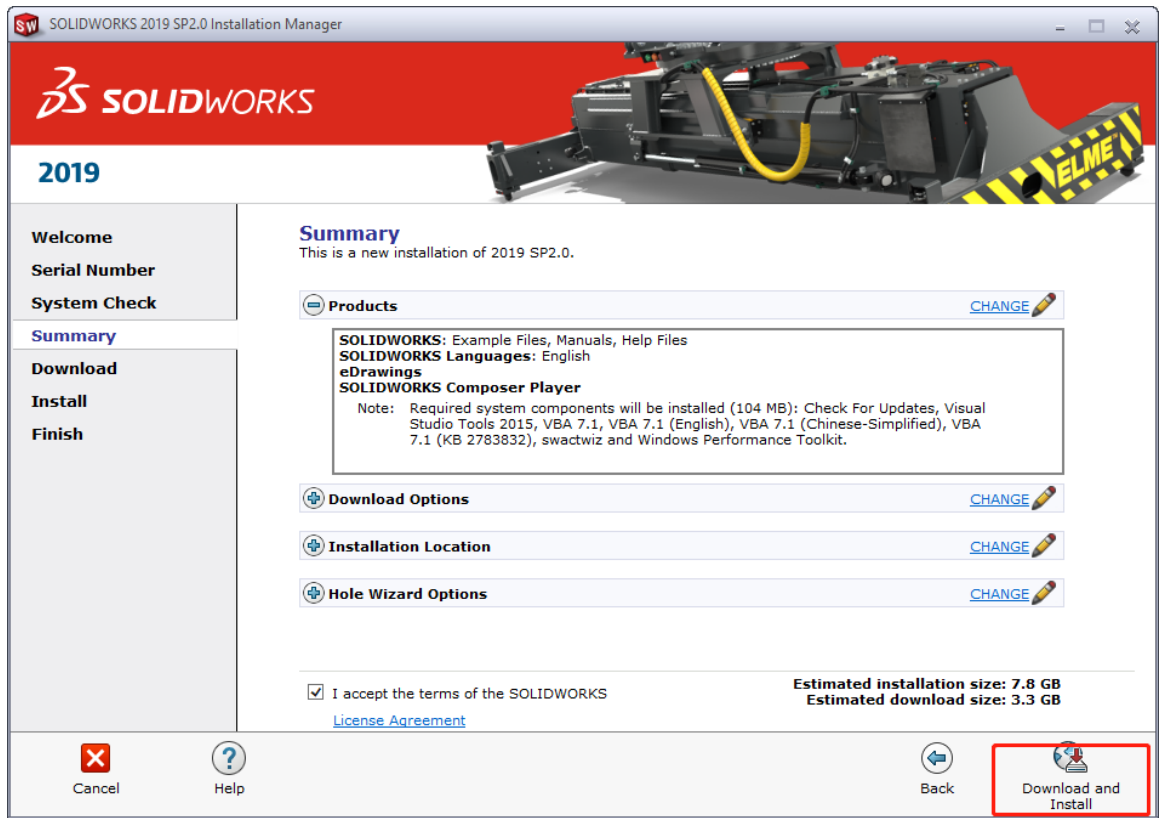
- Input SOLIDWORKS CAD serial number under 3D Design and leave other fields blank, click **next**. The Installation Manager will now check and verify you have the system requirements to run SOLIDWORKS. If something is amiss, you will be notified. This process may take several minutes.



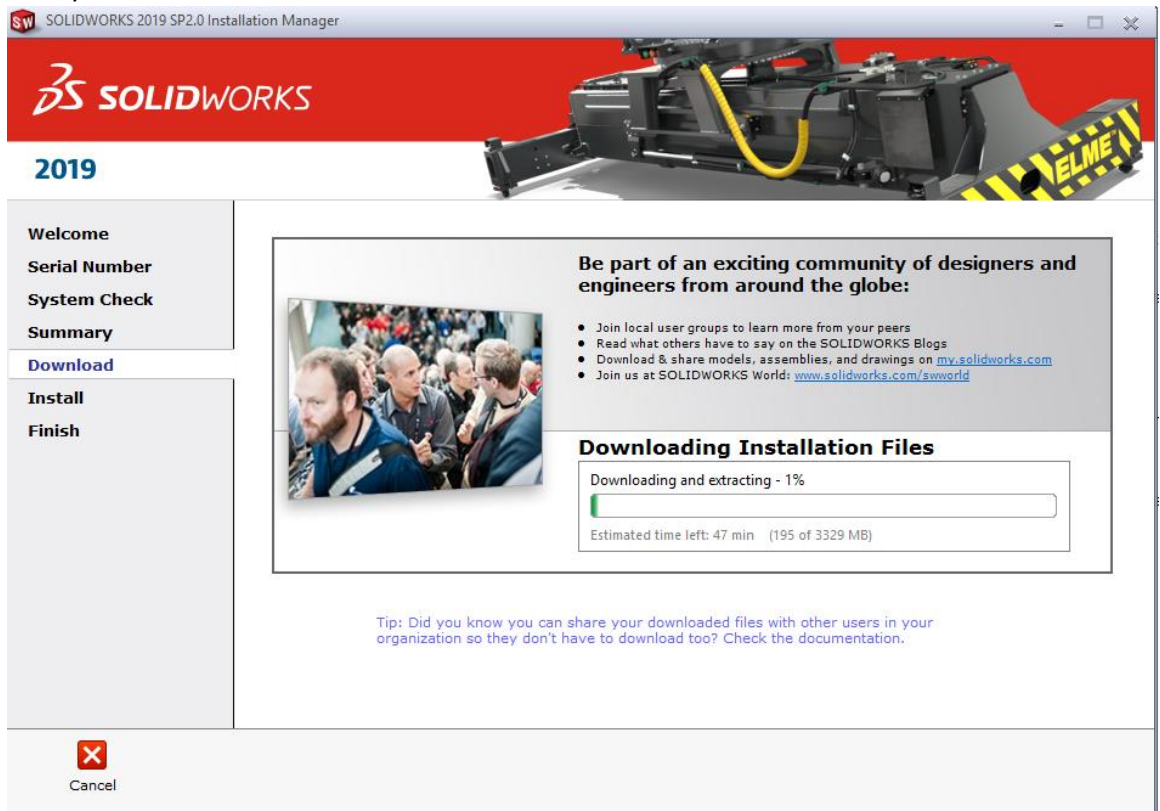
- Once your system has been checked, you will be taken to a summary screen displaying all of the products you will be installing.

**Check the box** marking that you accept the terms and conditions and click **Download and Install**.

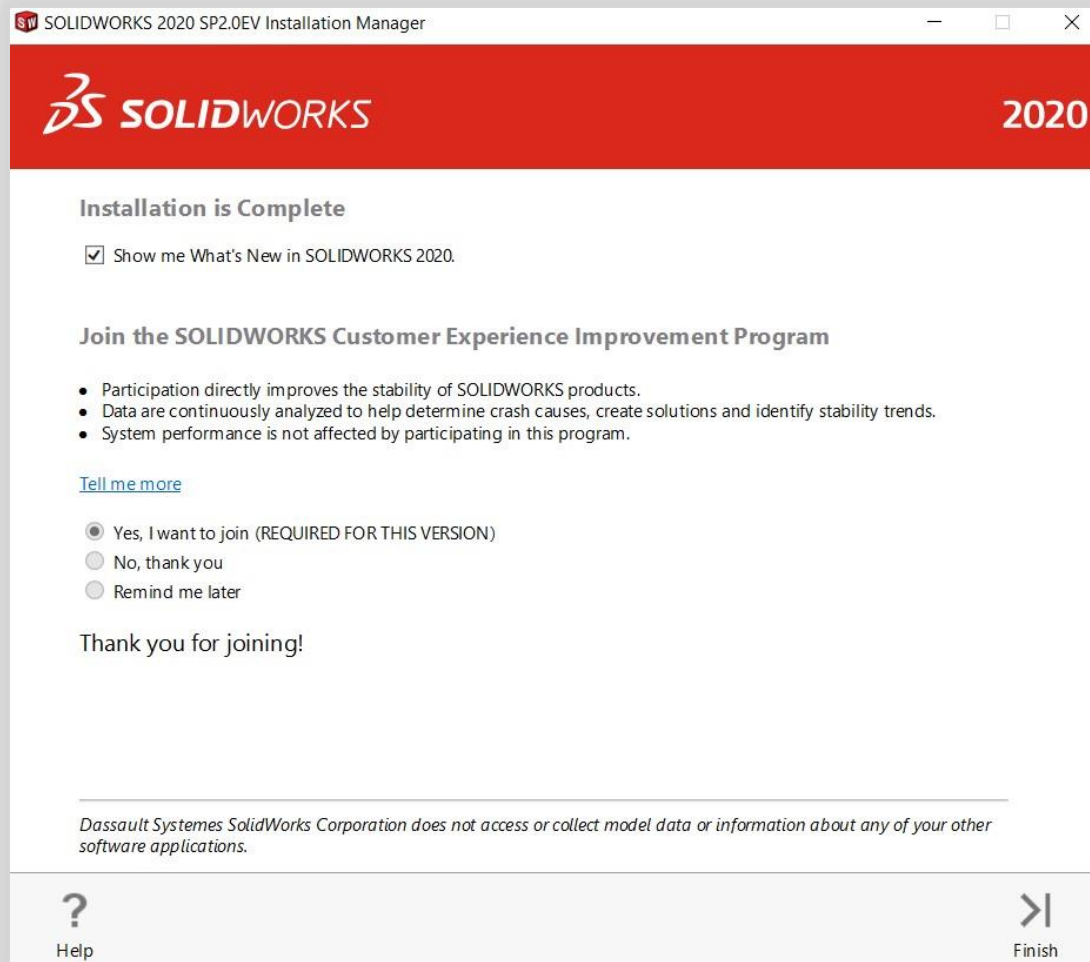
**Note:** Products shown may vary depending on the version of SOLIDWORKS you are using.



8. The system will download the installation files.



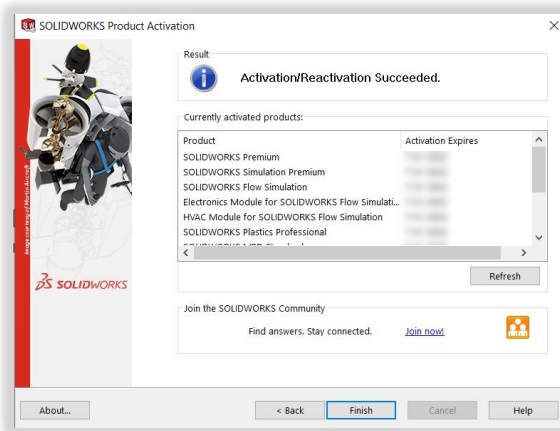
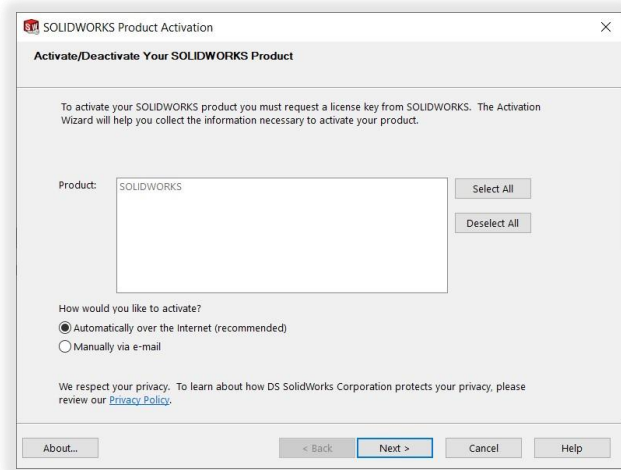
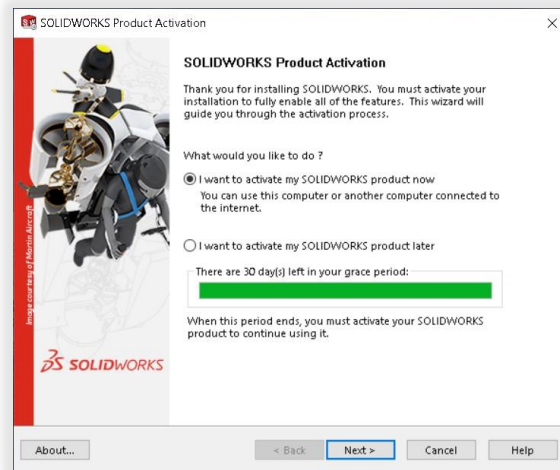
9. Once the installation is complete, click **Finish** to close the Installation Manager. You will be able to use your SOLIDWORKS products after successful activation.



## HOW TO ACTIVATE SOLIDWORKS

On the first launch of SOLIDWORKS, you will be prompted to activate your license. You can either activate your license after a 30 days trial or activate your license straight away.

To activate, proceed with the steps as shown below.



For any technical issues regarding download or installation please visit:

[www.solidworks.com/studentsupport](http://www.solidworks.com/studentsupport)